

Community Response and Priority Referral

Access To Early Childhood Services

This guide identifies services for children and families from the prenatal stage through age 5. There are 8 categories, beginning with family, then medical, and then moving across the early childhood lifespan. The guide is color coordinated in order to highlight linkages possible referral sources under other categories.



FAMILY (lifespan)



**Medical, Dental, and Social
Emotional Services**



**Early Intervention System
(ages 0 through 2)**



**Services For Preschool Children with
Disabilities (ages 3 through 5)**



**Home Visiting
(prenatal through age 5)**



**Child Care
(age 0+)**



**Early Head Start/Head Start
(prenatal through age 5)**



NC Pre Kindergarten

A Community Paradigm Shift For Children and Families

- PROBLEM STATEMENT

The existing delivery system acts as a barrier to accessing care and support services for parents and children.

- FAMILY DRIVEN

Emphasize and encourage family involvement with all systems providing services to children and families in order to strengthen the parent's role as an advocate and primary decision maker for their child's continued growth and development.

- PURPOSE

Help service providers and families refer young children to appropriate programs and community services that are designed to support families with children from the prenatal stage through age five

- VISION

Improve the integration of medical, educational, social emotional and developmental services for families while establishing the need for family involvement and family driven care.

- GOAL

Improve the promotion, prevention, transition and treatment of children and families by

- Promoting early intervention
- Helping community partners make appropriate referrals
- Listing available services/resources
- Highlighting age requirements and age transition points
- Emphasizing program collaboration and coordination (blending-braiding-transitioning seamless-uninterrupted)



FAMILY (lifespan)
Families are the primary decision makers for children's healthy development.

When a CHILD demonstrates a need

PARENTS/CAREGIVERS respond to a child's needs by providing care and seeking additional resources



SEEK ADDITIONAL SUPPORT

ACTION PATHWAYS
• ASPIRE Self-Sufficiency • Credit Counseling Services • Early Head Start and Head Start • Second Harvest Food Bank • Weatherization Assistance Program

ARMY COMMUNITY SERVICE
• Answer Unlimited • Exceptional Family Member Program • Family Advocacy Program

CUMBERLAND COUNTY DEPARTMENT OF SOCIAL SERVICES
• Supplemental Nutrition Assistance Program • Temporary Assistance for Needy Families

CUMBERLAND COUNTY DEPARTMENT OF PUBLIC HEALTH
• 123 Magic • Active Parenting • Adolescent Parenting Program • Reach Out and Read

PARTNERSHIP FOR CHILDREN
• Active Parenting The First Five Years • Child Care Resource and Referral • Eva Hansen Learning Center • Family Connect • Family Focus Resource Directory • Family Resource Center • NC Diaper Bank • Nurturing Skills for Families • Nurturing Parents & Their Infants, Toddlers & Preschoolers • Smart Start



FAMILY (lifespan)

Action Pathways provide direct social services to families with low and moderate incomes

- **Hunger** (Second Harvest Food Bank of Southeast North Carolina),
- **Housing** (Weatherization Assistance Program, Heating and Air Repair and Replacement Program, Duke Energy's Home Helping Fund, and the Community Housing Development Organization),
- **Education** (Early Head Start and Head Start) and
- **Empowerment** (Credit Counseling Services (CCCS) and ASPIRE Self-Sufficiency (CSBG)).

Army Community Service facilitate the command's ability to provide comprehensive, standardized, coordinated and responsive services that support soldiers, Department of Army civilians and families regardless of geographic location and to maximize technology and resources, eliminate duplication in service delivery and measure service effective.

- **Answer Unlimited** prepared by Army Community Service provides resource directory for Fort Bragg Soldiers, Family Members, civilian employees and community members.
- **The Exceptional Family Member Program (EFMP)**, administered by the Army Community Service, provides comprehensive support to family members with special needs. EFMP takes an all-inclusive approach to coordinate military and civilian community, educational, medical, housing, and personnel services to help Soldiers and their Families with special needs.
- **Family Advocacy Program**

Cumberland County Department of Social Services enhance the quality of life for the citizens of the county by promoting self-sufficiency and maximizing well-being thereby, enabling individuals and families to believe in their own abilities and become self-reliant.

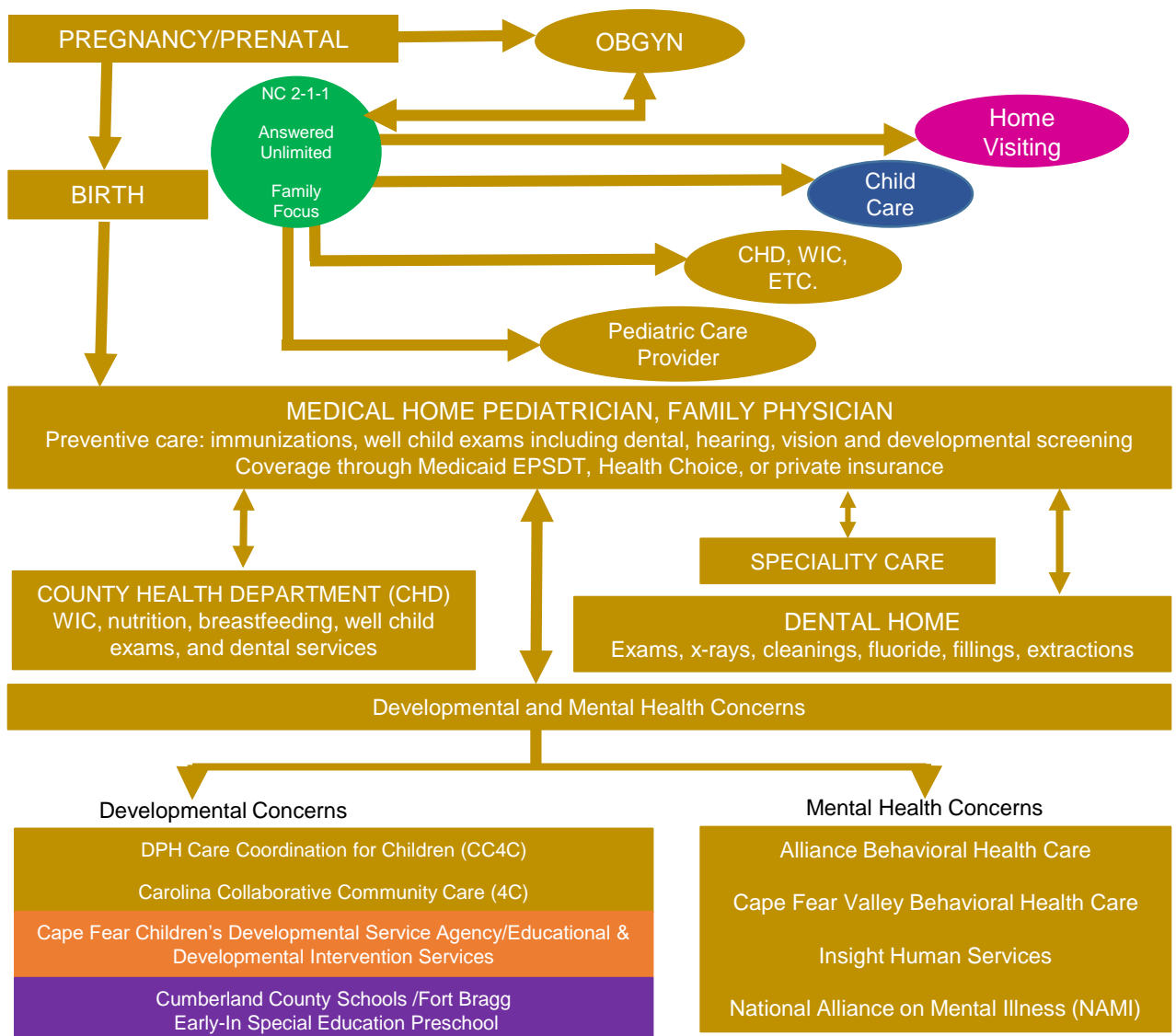
- **Supplemental Nutrition Assistance Program (SNAP)** offers nutrition assistance to eligible, low-income individuals and families and provides economic benefits to communities.
- **Temporary Assistance for Needy Families (TANF)** is designed to help needy families achieve self-sufficiency.

Partnership for Children (PFC) administer Smart Start and NC Pre K, serve and assist families with young children by identifying and addressing barriers to success.



MEDICAL, DENTAL, AND SOCIAL EMOTIONAL SERVICES

Families should utilize preventive care services available, including screenings, and connect to a medical and dental home.



MEDICAL, DENTAL, & SOCIAL-EMOTIONAL SERVICES

Assuring Better Child Health and Development (ABCD), administered by Carolina Collaborative Community Care, works with early childhood stakeholders increase identification of developmental delays, referrals, and more timely follow-up services under Part B and C of Individuals with Disabilities Act (IDEA).

Cape Fear Children's Developmental Services Agency (CDSA) is the local coordinating agency for the North Carolina Infant Toddler Program which provides early intervention services for children under 3 years of age who have developmental delays or established medical conditions that place them at risk for delays.

Care Coordination for Children (CC4C) administered by the Cumberland County Department of Public Health is a voluntary program available to all children of Cumberland County from birth to five years with special health care, developmental and social needs.

Carolina Collaborative Community Care (4C) is the local Community Care of North Carolina (CCNC) Network, which is NC's Medicaid platform for care management services.

Coastal Horizons provides a continuum of professional services for prevention, crisis intervention, Intensive Family Preservation Services (IFPS), criminal justice alternatives, and treatment of substance use and mental health disorders.

Cumberland County Department of Public Health (DPH) provide immunization, infectious disease services, and case management services. Contact your local CHD to determine if well child exams or dental services are provided.

Cumberland County Schools Early-In Special Education Preschool (Early-In) provides special education and related services to eligible preschool children with disabilities who reside in Cumberland County.

Educational & Developmental Intervention Services (EDIS) provides services to support families of children developmental delays, disabilities, or special learning needs.

Insight Human Services provides substance abuse and mental health services.

Medicaid administered by Department of Social Services, provides health coverage to millions of Americans, including eligible low-income adults, children, pregnant women, elderly adults and people with disabilities.

North Carolina Health Choice (NCHC) is for children under the age of 19 who do not have health insurance and whose family income is above the Medicaid income level and below 300 percent of the federal poverty level. Early Periodic Screening, Diagnostic and Treatment (EPSDT) is known in North Carolina as Health Check and is defined by federal law

SHIFT NC (Sexual Health Initiatives For Teens) leads Cumberland County to improve adolescent and young adult sexual health.

Special Supplemental Nutrition Program for Women, Infants, and Children (WIC) is administered by DPH; provides services including food benefits, nutrition education, breastfeeding counseling and support, and referrals for pregnant, breastfeeding, and postpartum women, infants, and children up to age 5 who meet the qualifications for participation in the WIC program.



EARLY INTERVENTION SYSTEM (ages 0 through 2)

Early Intervention is a voluntary system for children who meet eligibility criteria with developmental delays or conditions known to cause developmental delays in one or more of the following: physical, communication, cognitive, adaptive, social or emotional.

Child may be screened with ASQ-3 and/or ASQ-SE, but not required

Family, pediatric care provider, or other community service may refer to Child Find

Service Coordinator will arrange evaluation(s) to determine eligibility

Eligible

Individualized Family Service Plan (IFSP)
developed by team

Early Intervention services are individualized,
developmentally appropriate, and provided in
the natural environment

Cumberland County Schools/Fort Bragg
Early-In Special Education Preschool

Ineligible

• NC 2-1-1 • Answered Unlimited • Family Focus

In needing continued developmental services,
refer to pediatric care provider

Home health
provider or
other
appropriate
resources

EARLY INTERVENTION SYSTEM (AGES 0 THROUGH 2)

Cape Fear Children's Developmental Services Agency (CDSA) is the local coordinating agency for the North Carolina Infant Toddler Program which provides early intervention services for children under 3 years of age who have developmental delays or established medical conditions that place them at risk for delays.

Care Coordination for Children (CC4C) administered by the Cumberland County Department of Public Health is a voluntary program available to all children of Cumberland County from birth to five years with special health care, developmental and social needs.

Carolina Collaborative Community Care (4C) is the local Community Care of North Carolina (CCNC) Network, which is NC's Medicaid platform for care management services.

Educational & Developmental Intervention Services (EDIS) provides services to support families of children developmental delays, disabilities, or special learning needs.



Services for Preschool Children with Disabilities (ages 3 through 5)

Special education services area provided for preschool children with disabilities who meet eligibility criteria. To qualify, the disability must adversely affect the child's participation and progress in age appropriate activities.

Request for Initial Evaluation received by Local Education Agency (LEA)

Individual Education Program (IEP) Team determines the need for evaluation

Yes

Written parental consent for initial evaluation obtained

Initial evaluation completed within 60 days of LEA receipt of consent for the initial evaluation

Eligibility for special education services determined within 30 days of completion of last assessment

IEP developed by team within 30 days of eligibility determination

Written parental consent obtained for provision of special education services in the LEA

No

Parent may request another evaluation at a later date

• NC 2-1-1 • Answered Unlimited • Family Focus

In needing continued developmental services, refer to pediatric care provider

Home health provider or other appropriate resources

SERVICES FOR PRESCHOOL CHILDREN WITH DISABILITIES (AGES 3 THROUGH 5)

Care Coordination for Children (CC4C) administered by the Cumberland County Department of Public Health is a voluntary program available to all children of Cumberland County from birth to five years with special health care, developmental and social needs.

Carolina Collaborative Community Care (4C) is the local Community Care of North Carolina (CCNC) Network, which is NC's Medicaid platform for care management services.

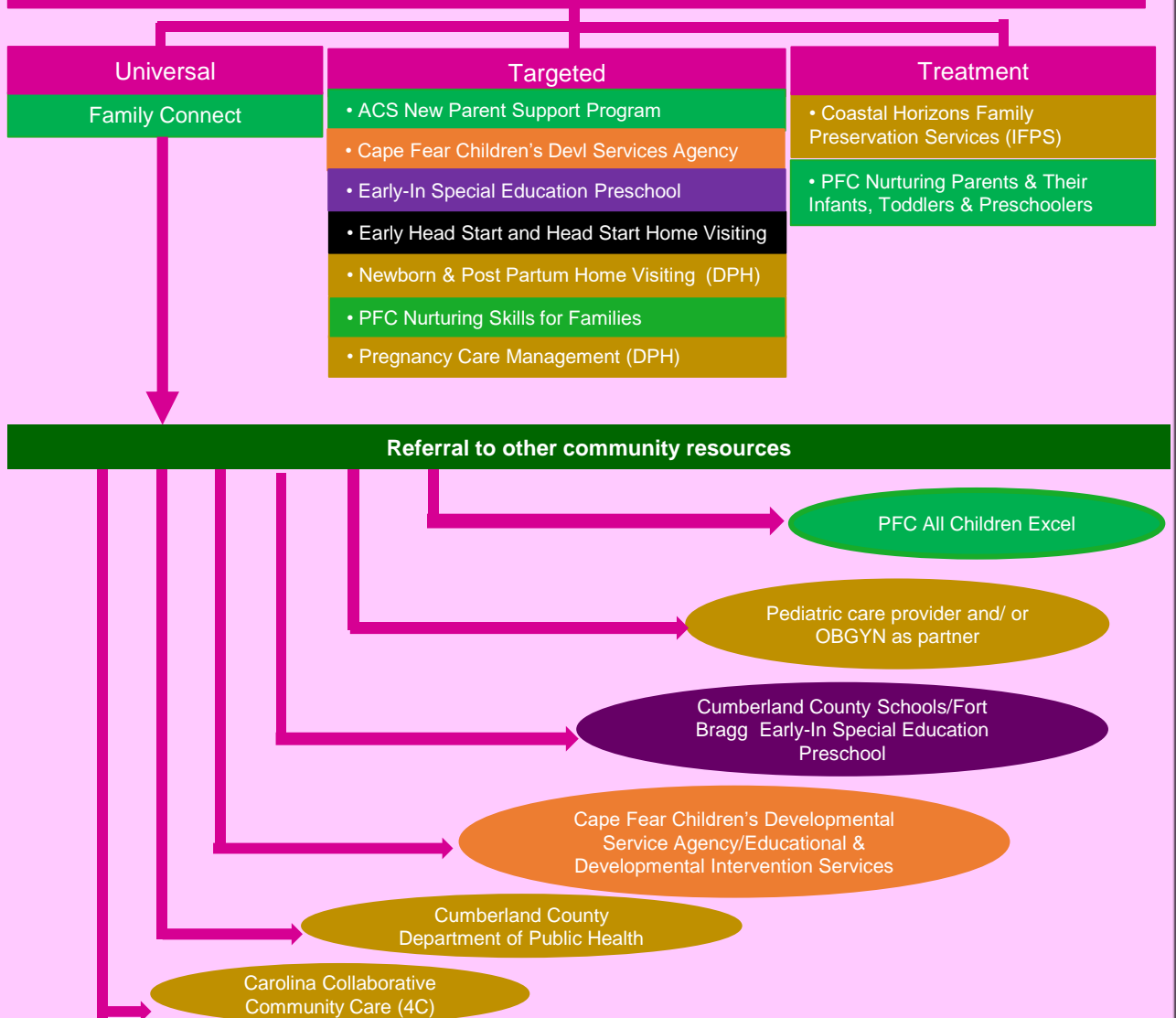
Cumberland County Department of Public Health (DPH) provide immunization, infectious disease services, and case management services. Contact your local CHD to determine if well child exams or dental services are provided.

Cumberland County Schools Early-In Special Education Preschool (Early-In) provides special education and related services to eligible preschool children with disabilities who reside in Cumberland County.



HOME VISITING (prenatal through age 5)

Home Visiting programs exist throughout the county to provide services to help strengthen at-risk families.



HOME VISITING (PRENATAL THROUGH AGE 5)

Adolescent Parenting Program

Cape Fear Children's Developmental Services Agency provides home visitation services for families with children ages birth to third birthday for children with special needs.

Carolina Collaborative Community Care provides home visits from birth until age five or until goals are met.

Coastal Horizons provides a continuum of professional services for prevention, crisis intervention, Intensive Family Preservation Services (IFPS), criminal justice alternatives, and treatment of substance use and mental health disorders.

Early Head Start and Head Start provide comprehensive services including home visitation to low-income families with young children and to give tools to parents to help them be their children's first teacher and provide support for families.

Family Connect administered by the Partnership for Children of Cumberland County

New Parent Support Program administered by the Army Community Services

Newborn & Post-Partum Home Visiting Nursing Services administered by the Cumberland County Department of Public Health

Nurturing Parenting Program (NPP) Nurturing Skills (NSF) for Families Program provides weekly home visitation to parents and families exhibiting mild to moderate risk of family dysfunction and the presence of 1 to 3 risk factors.

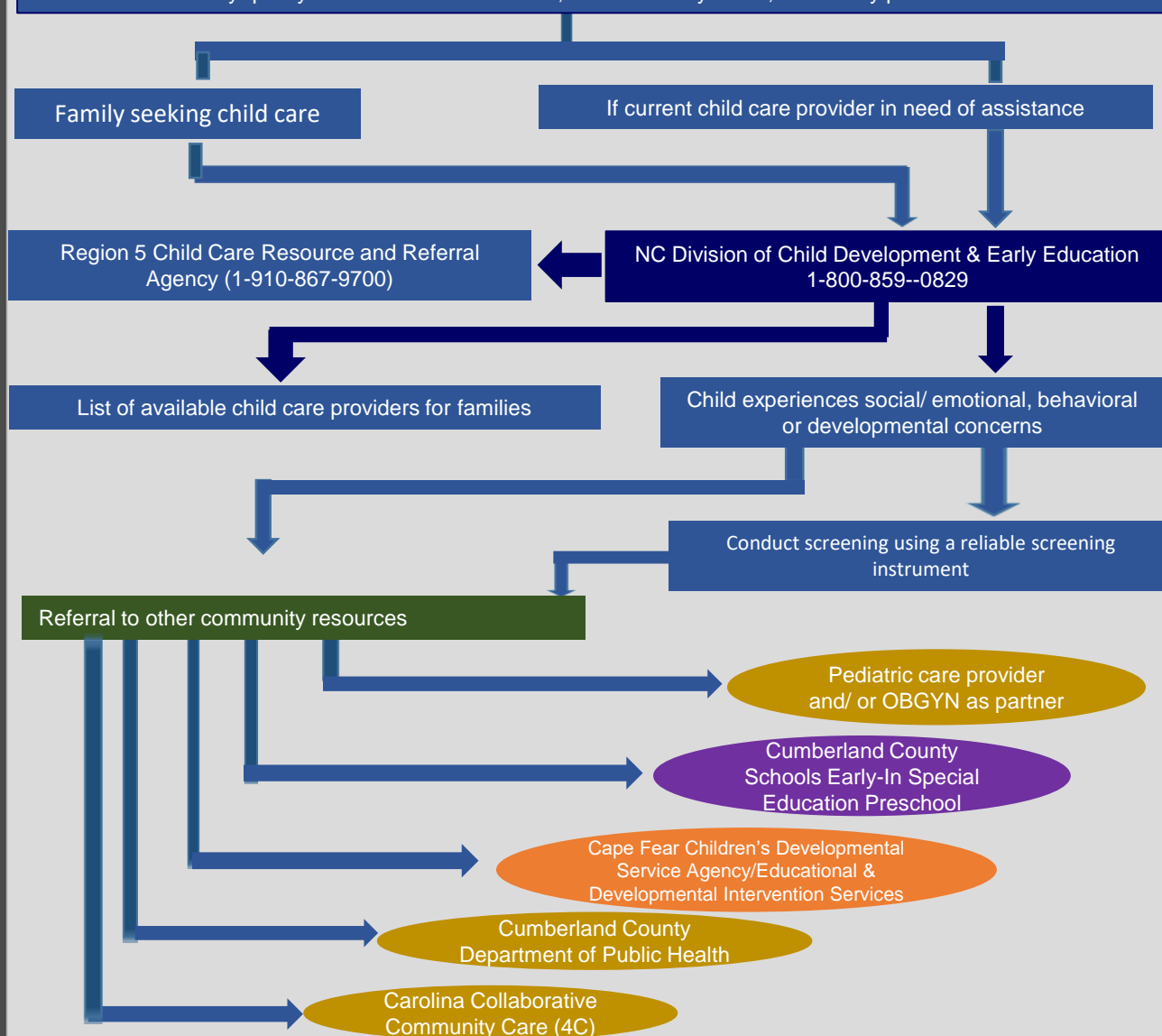
Nurturing Parenting Program (NPP) Parents & Their Infants, Toddlers & Preschoolers (PITR) provides 16 Group-based sessions with 7 Individual home/parent sessions to families in need of treatment due to high-risk abuse, neglect or family violence occurring or has occurred.

Pregnancy Care Management, administered by Cumberland County Dept. of Public Health, provides home visitation to high risk pregnant moms due to previous preterm birth, chronic medical conditions complicating pregnancy, substance use, unsafe living environment.



CHILD CARE (age 0+)

Any quality licensed child care center, certified family home, or half day/preschool.



CHILD CARE (AGE 0+)

Department of Social Services Child Care Subsidy program provides Cumberland County's low and moderate-income families with equal access to affordable and quality child care services.

Child Care Resource and Referral Consumer Education supply resources and referrals for families and child care providers.

Child Care Coaching and Consultation deliver training and technical assistance for child care providers to improve quality, health, safety, and nutrition.

FTCC Parents for Higher Education Subsidy assist current low income, full time curriculum students (parents) enrolled at Fayetteville Technical Community College with paying for child care.

PFC Child Care Subsidy assist low income parents experiencing crisis, enrolled in high school or middle school, parents attending institutions of higher learning, or actively seeking employment .

Spainhour Subsidized Child Care provides infant and toddler slots through a developmental day program blending together in a classroom setting typically developing children and those children with special needs

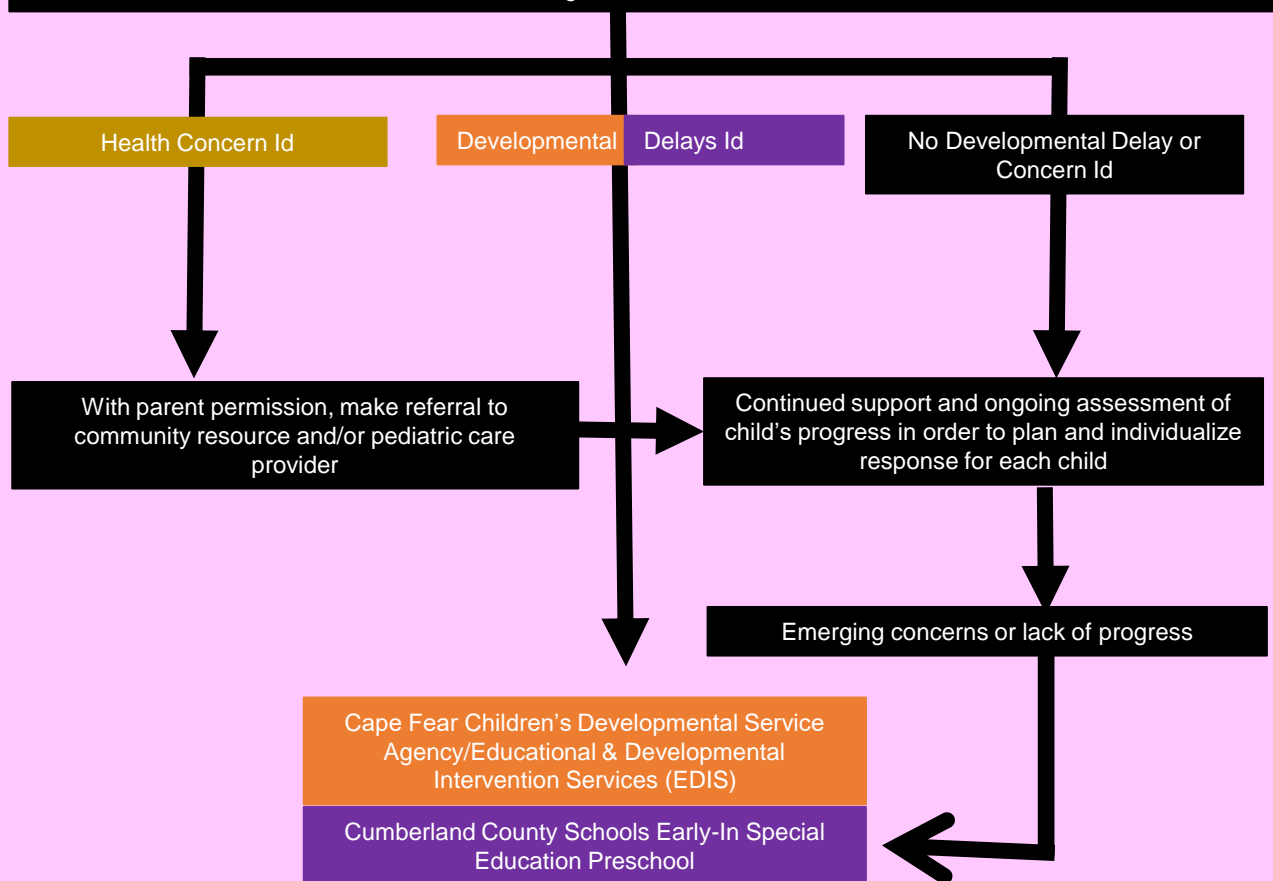
WAGE\$ provides education-based salary supplements to low-paid teachers, directors and family child care providers (earning at or below \$14 per hour) working with children between the ages of birth-five in a licensed child care program.



EARLY HEAD START/HEAD START (prenatal through age 5)

Early Head Start/Head Start (EHS/HS) is a federally funded program that serves low income pregnant women and children through age 5. Programs are designed locally based on community needs, may be center-based or home visiting, and promote school readiness

All EHS/HS children receive comprehensive screening with results discussed with parents: health, developmental, hearing, vision, and dental.



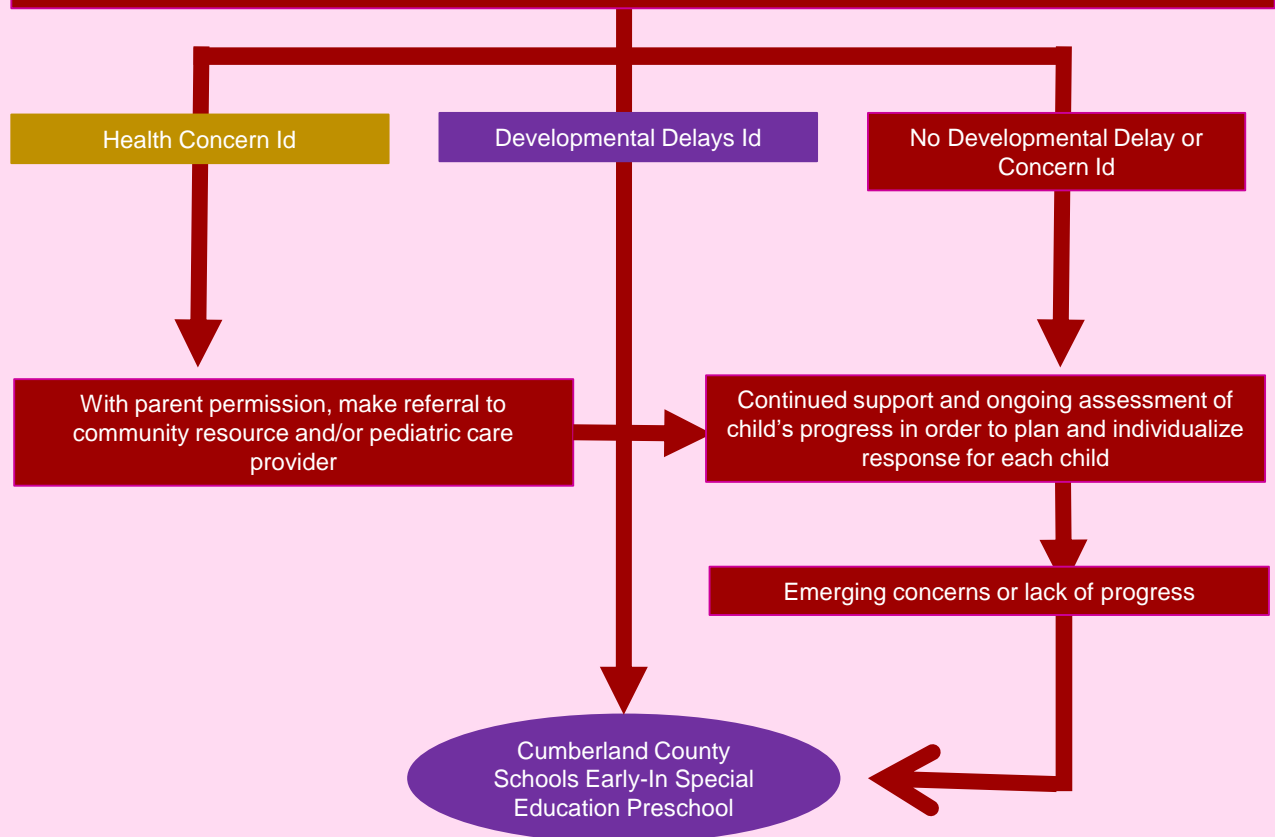
EARLY HEAD START/HEAD START (PRENATAL THROUGH AGE 5)

Early Head Start and Head Start administered by Action Pathways is a Federally funded child development program that provides free social and educational opportunities for income eligible children from ages 0-5, including children with special needs and pregnant women.



NC Prekindergarten state funded pre-kindergarten program. All children who are 4 years old by August 31st of the year and residents of Cumberland County are eligible.

All Pre-K children receive comprehensive screening with results discussed with parents: health, developmental, hearing, vision, and dental.



NORTH CAROLINA PREKINDERGARTEN (NC PRE-K) PROGRAM (Age 4)

NC Pre K Program administered by the Partnership for Children of Cumberland County is designed to provide high-quality educational experiences to enhance school readiness for eligible four-year-old children.

Sources

1. Center for the Study of Social Policy <https://www.cssp.org/policy/policy-matters>
 1. Policy Matters: Promoting Child Safety, Permanence, And Well-being Through Safe And Strong Families, Supportive Communities, And Effective Systems
 2. Policy Matters: Encouraging Strong Family Relationships
 3. Policy Matters: Engaging Youth in Positive Productive Roles
 4. Policy Matters: Improving the Readiness of Children for School
 5. Policy Matters: Raising Educational Achievement
 6. Policy Matter: Promoting Better Family Health
2. National Pathways Mapping Initiatives <http://www.lisbethschorr.org/pathways/>
 1. Pathway to the Prevention of Child Abuse and Neglect (Annie E. Casey Foundation and the W.K. Kellogg Foundation)
 2. Pathway to Children Ready for School and Succeeding at Third Grade (Annie E. Casey Foundation and the W.K. Kellogg Foundation)
3. NC Pathways to Grade-Level Reading Project (NC Early Childhood Foundation) <http://buildthefoundation.org/pathways/>
4. Alabama Access Guide to Early Childhood Services for Children and Families <http://children.alabama.gov/resources/>
5. Kentucky Access Guide to Early Childhood Services for Children and Families <https://kypartnership.org/resource/early-childhood-services/>
6. NCIOM Task Force on Essentials for Childhood: Safe, Stable and Nurturing Relationships and Environments to Prevent Child Maltreatment (March 2015)