

Community Child Abuse Prevention Plan



Action Teams

Community Child Abuse & Neglect Prevention Plan

Vision:

Cumberland County is a safe and stable community, where children are nurtured and families thrive.



Families at risk for child abuse and neglect



STEERING TEAM

Oversight
System Development



ACTION TEAMS

Family Engagement
Community Trainings
Data



CURRENT COLLABORATIVE STRATEGIES

Bringing Protective Factors to Life in Your Work
Resilience: The Biology of Stress & the Science of Hope
Parent Cafés
Evidence-Based/Informed Practices

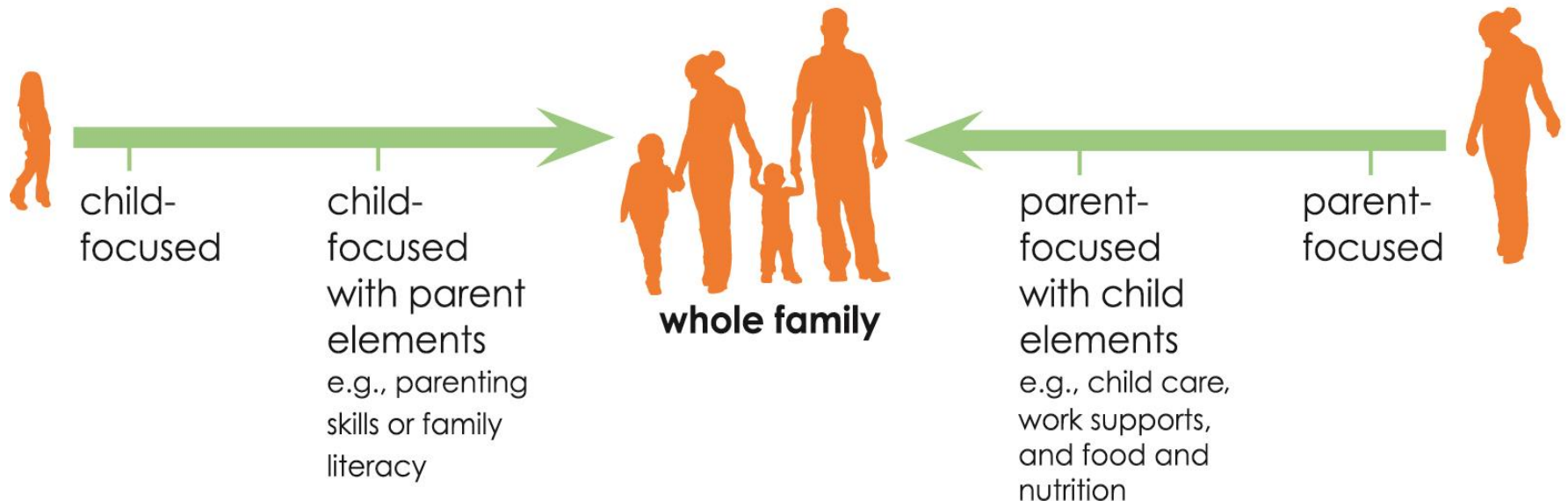
Impact Areas

Build The Capacity Of Parents And Prevention Partners

- Increase Social and Emotional Competence of Children
- Build Parental Resilience
- Increase Knowledge Of Parenting And Of Child And Youth Development
- Build Concrete Support in Time of Need
- Broaden Social Networks

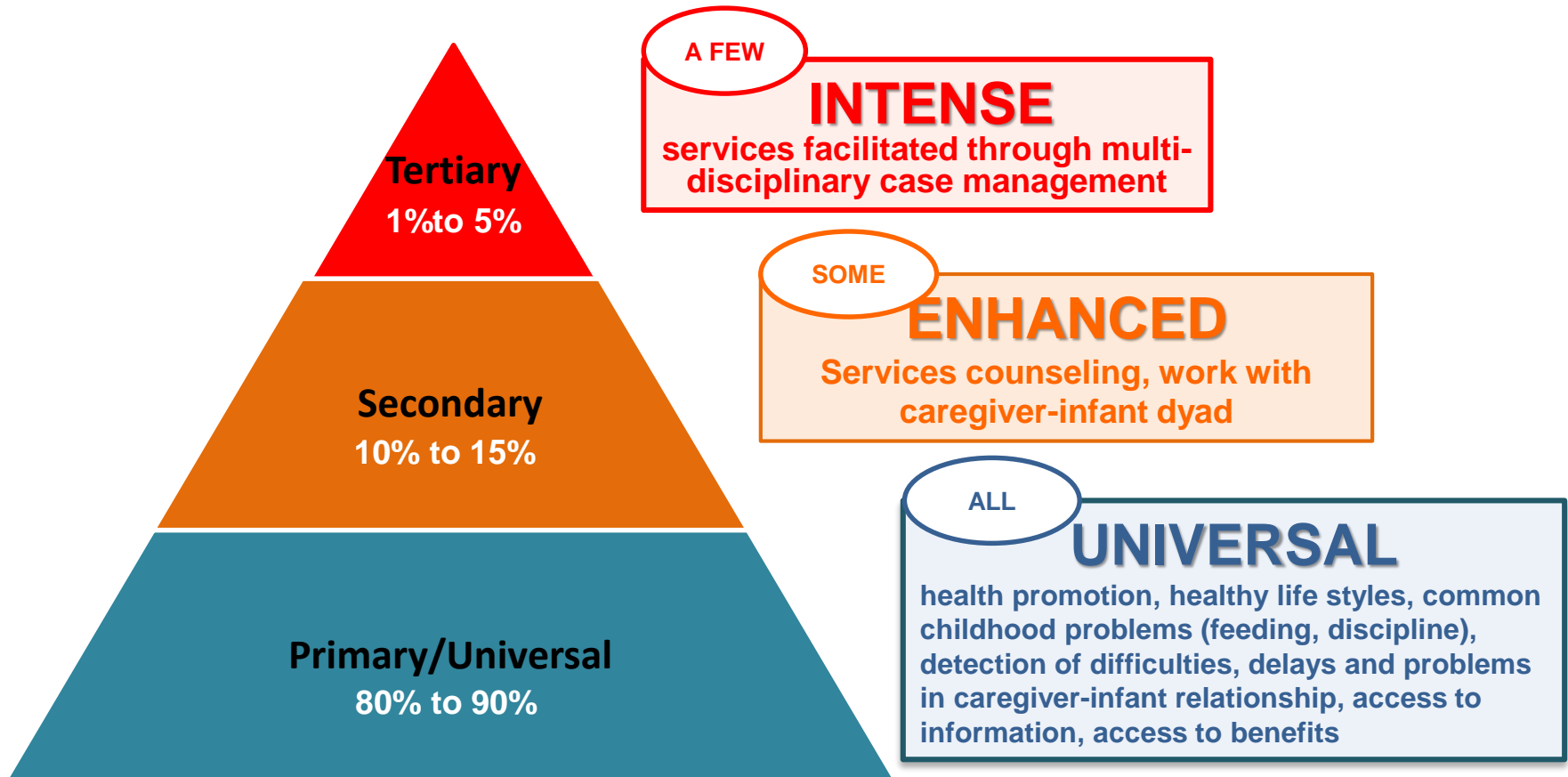
Cultivate Beneficial Prevention-Focused Partnerships

- Collective Action To Reduce Child Protection Risks, Build Assets And Increase Thriving
- Sustainable Networks Of Services And Supports Contribute To Child Protection
- Influence Community To Promote And Support Child Protection



Priority #1

Raise Awareness of Resources for Parents



Prevention is increasingly recognized as occurring along a continuum.

Parent Engagement Action Team

Address Priority # 1

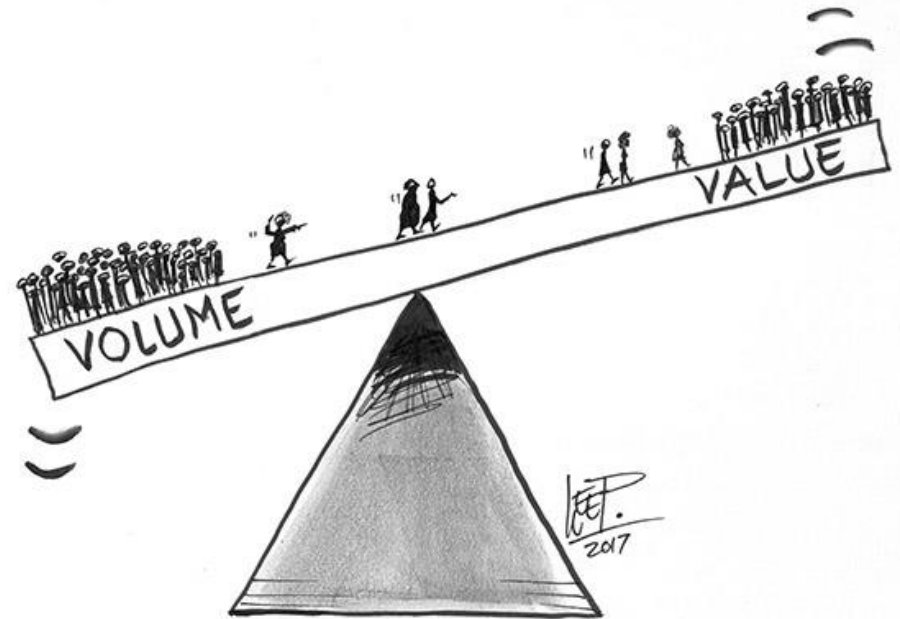
- Promote coordination and integration of existing services and resources for preventing maltreatment.
- Advocate for changes in programs and policies related to maltreatment and its prevention.

Action Steps

1. Recruit Team
2. Host Parent Café's to allow families to have their own conversations about keeping their families strong through the Protective Factors
3. Explore mechanisms to make it possible to educate families on how to access available services
4. Seek ongoing, direct feedback from parents and other caregivers.

Priority #2: Educate And Motivate Key Stakeholders On Brain Science, Aces, And Resilience

- Adverse Childhood Experiences
 - Routine Screening for Risk
 - Viewing of Resilience: The Biology of Stress & the Science of Hope
- Protective Factors Framework
 - Parent Cafés
 - Bringing Protective Factors to Life in Your Work



Tipping Point
5% of 309,000

Community Training Action Team

Address Priority # 2

Engage children, families, communities, providers and leaders around a common communication platform and shift the dialogue to

1. align with the “no shame, no blame” science-based ACEs framework
2. promote the community norm that we all share responsibility for the well-being of children
3. focus on prevention and resilience-building

Action Steps

1. Expand the SOAR network
2. Develop presentation kits depending on target audience
3. Schedule presentations to municipalities for next 6 months
4. Schedule Screening of Movie – Resilience for next 6 months
5. Host Darkness to Light Training
6. Host Protective Factors Training (Jan - Jul 2018)
7. Host Community Resiliency Model Training (Spring 2018)
8. Host Parent Café’s Training (Spring 2018)

Priority #3

Demonstrate Impact of Our Work



Data Learning Action Team

Address Priority # 3

- Develop and disseminate data products using consistent, straightforward data indicators and narrative for a range of audiences, including state lawmakers and policy makers, key constituencies, proposals and the general public

Action Steps

1. Catalogue Local Services
2. Develop, Implement and Maintain Child/Family Well-Being Report Card
3. Use the data to support other action goals and steps

To Get Involved, Contact

Partnership for Children of Cumberland County, Inc.

☺ Linda Blanton, Vice President
of Planning & Evaluation

☎ Phone: (+910) 574 – 6522

✉ e.mail: lblanton@ccpfc.org



*“Children are the living messages we
send to a time we will not see”.*

~John W. Whitehead, “The Stealing of America”